

Community Orientation Guide



The South Australian Health and Medical Research Institute (SAHMRI) and Health Translation SA are committed to community engagement in health and medical research. We believe community members have the right to be involved in the research that affects them. We also believe that community members can and should participate across all stages of research, and are committed to facilitating community participation in research preparation, execution and translation.



A handwritten signature in black ink, appearing to read 'Steve Wesselingh'.

Professor Steve Wesselingh

**Executive Director
SAHMRI**



A handwritten signature in black ink, appearing to read 'Wendy Keech'.

Wendy Keech

**Chief Executive Officer,
Health Translation SA**

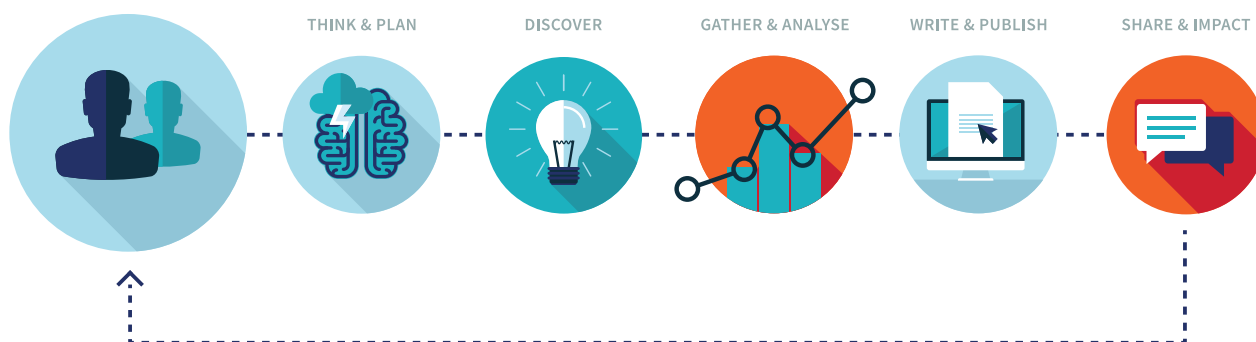
Contents

Welcome	3
Our Approach to Community Engagement	4
Getting Involved	5
Now that I'm Registered	6
Getting to SAHMRI	7
Accessibility at SAHMRI	8
SAHMRI Tours	9
Training	9
About SAHMRI	10
About Health Translation SA	11
Framework for Community Engagement	12
Glossary of Terms	13
Useful Links	14

Acknowledgement of Country

SAHMRI is located on the traditional lands of the Kaurna people. The SAHMRI and Health Translation SA communities acknowledge and pay respect to the Kaurna people as the traditional custodians of the Adelaide region. We also acknowledge the deep feelings of attachment and the relationship of the Kaurna people to their country. We pay our respects to the Kaurna peoples' ancestors and the living Kaurna people today.

Welcome



This orientation guide is designed to give you an overview of the role of SAHMRI and Health Translation SA. It also details our approach to community engagement and some other useful information that will assist you in your involvement with the SAHMRI and Health Translation SA research communities.

On behalf of the SAHMRI and Health Translation SA teams, we are delighted to have you involved in our research. Our shared purpose is to transform health and medical research into better health outcomes for our community.

SAHMRI brings together researchers, South Australia's three universities and the health care system. In collaboration with its partners, SAHMRI provides a clear focal point for health and medical research, paving the way for new partnerships, innovative research projects and improved health outcomes.

To maximise the impact of research in South Australia, SAHMRI has been a strong supporter for the establishment of Health Translation SA. Health Translation SA is hosted by SAHMRI and is a collaborative network of nine academic, research and health care agencies, and the community, (including SAHMRI) which have come together to enhance the translation of our research into clinical practice, health education and policy across the state.

The involvement of community members in the work of SAHMRI and Health Translation SA is critical to ensure that the research we conduct is relevant to community needs, is of high quality and can more effectively be translated into improved health outcomes.

Our Approach to Community Engagement

As a community member, we believe you are well placed to bring a community perspective to our research.

Community engagement within SAHMRI and Health Translation SA brings your perspectives, together with the perspectives of our researchers, to help plan research priorities, and the projects themselves, and to make sure our research really does improve the health of individuals and the South Australian community.

You may also have had specific health related experiences, either personally or in caring for others. Through these experiences, you will have been a 'consumer' of health and medical services and now have observations, thoughts and ideas that can be helpful to inform more specific areas of research across SAHMRI and Health Translation SA.

Further information about our approach to community engagement can be found on page 5.

We look forward to partnering with you for better health for outcomes for all South Australians.

Principles to support community engagement

Community engagement within SAHMRI and Health Translation SA is guided by the following principles:

- Individuals affected by research have the right to be involved in, and influence, health and medical research.
- Community members can, and should, be involved across all stages of research.
- Interactions between community members and researchers is based on a partnership and mutual respect.
- Community members are kept informed about how their input influences research.
- Community members and researchers are provided with opportunities to develop their capacity, abilities and skills in community engagement.

The principles have been adapted from the work of Aboriginal communities within the Wardliparingga Aboriginal Research Unit, the National Health and Medical Research Council National Statement on Ethical Conduct in Human Research (2007), and the International Association for Public Participation's (IAP2) Core Values for the Practice of Public Participation.

Getting Involved



Together, SAHMRI and Health Translation SA are committed to the engagement of community members across all stages of research.

Preparation

Deciding what to research and how to do it.

Execution

Doing the research.

Translation/Impact

Making sure the research findings change clinical practice, policy and education.

Some specific examples of how you can be involved include:

- Informing the design of research studies.
- Reviewing grant applications or other research documents.

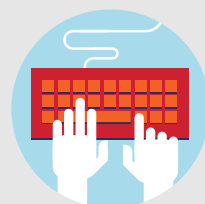
- Participating in community advisory groups or lab meetings.
- Assist in writing the patient information and consent forms for clinical trials.
- Giving feedback on the public messages about new research findings.
- Help disseminate research findings amongst your informal or formal networks.
- Co-presenting on research findings at conferences.
- Providing advice about how research findings can be translated into clinical practice, policy and education.
- Collaborating with researchers to evaluate the research process.
- Improve the experience of the health system for other people.
- Ensure that health and medical research funding and interventions are focused on areas of most need and relevance to our community.
- Enhance the ethical standards and the quality of health and medical research.
- Build your understanding of, and awareness and support for, health and medical research.
- Ensure research findings reach those who need it most.

What are the benefits of being involved in health and medical research?

By engaging in the health and medical research activities you will be helping to:

How do I register my interest?

To register your interest, please visit the SAHMRI website [here](#)



Now that I'm Registered



How do I find out about community engagement opportunities?

You will be notified of community engagement opportunities via email and will be invited to submit an expression of interest.

Each community engagement opportunity will include specific details about how to register your interest.

Will I be reimbursed for sitting fees or out of pocket expenses?

Reimbursement and sitting fee arrangements will be detailed within each expression of interest.

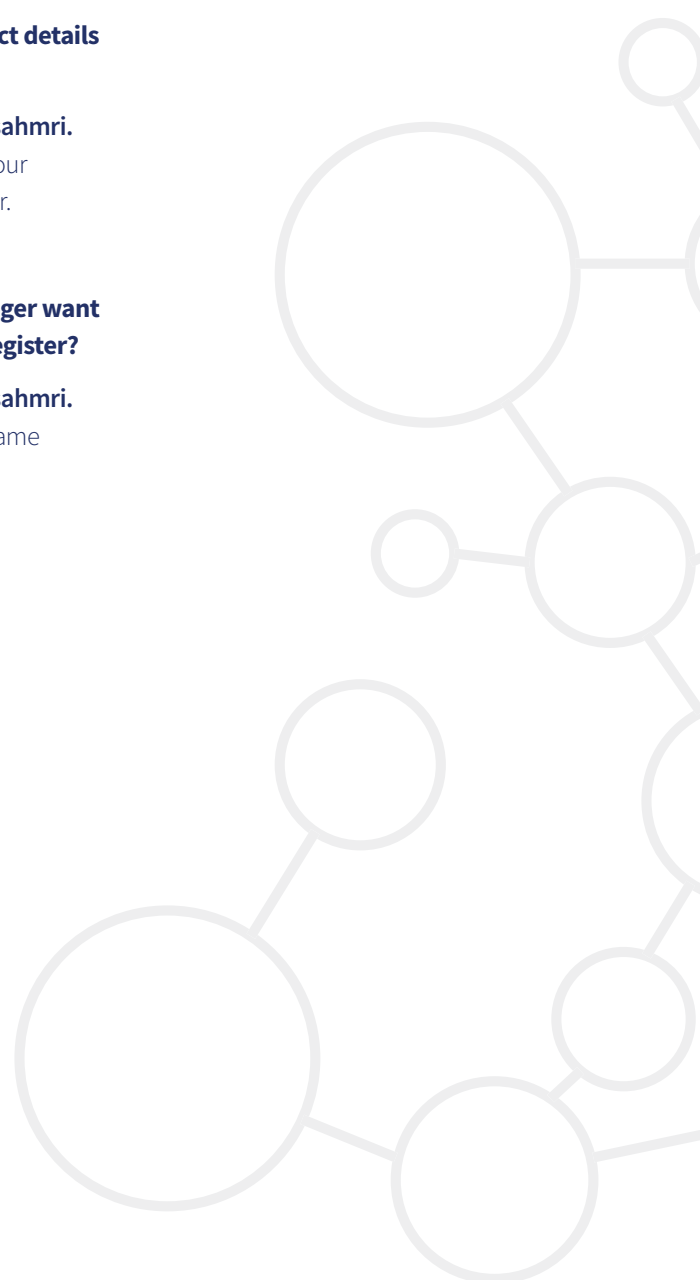
As a general guide, please download SAHMRI's Policy for Reimbursement and/or Sitting Fees of Advisory Groups [here](#)

How do I update my contact details on the register?

Please email community@sahmri.com if you need to update your contact details on the register.

What should I do if I no longer want to have my name on the register?

Please email community@sahmri.com if you would like your name removed from the register.



Getting to SAHMRI



SAHMRI location

SAHMRI is located next to the Royal Adelaide Hospital on North Terrace. You can't miss it!



What public transport is available to access SAHMRI?

SAHMRI is easily accessible by public transport. Timetables for Adelaide's bus, train and tram services can be obtained from the Adelaide Metro website [here](#).

The closest tram stop is Royal Adelaide Hospital. The closest bus stops are stop Y1 North Terrace (South side) and stop B2 North Terrace (North side).



What parking is available at SAHMRI?

Due to excellent public transport links and proximity to Adelaide's city centre there is no public parking available at SAHMRI however there are various paid and street parking options nearby. Parking options include:

[Adelaide Convention Centre](#)

The Adelaide Convention Centre is a 10 minute walk down North Terrace to SAHMRI. Please check their website for current parking rates.

[Entertainment Centre](#)

The Adelaide Entertainment Centre offer a 'Park and Ride' facility. You can take the free tram directly to the

SAHMRI facility by alighting at the Royal Adelaide Hospital Stop on North Terrace.

[Royal Adelaide Hospital](#)

The Royal Adelaide Hospital is located next to SAHMRI and offers public parking. Please check their website for current parking rates.

[Secure Parking](#)

Secure Parking provide SAHMRI guests with a flat rate, providing that you validate your ticket at the reception prior to leaving the SAHMRI building.

[Wilson's on Hindley Street](#)

Wilson's provide SAHMRI guests with a flat rate, providing that you validate your ticket at reception prior to leaving the SAHMRI building.

Special arrangements can be made with SAHMRI in situations where access via car is required. On-street parking is also available in nearby side streets.

Accessibility at SAHMRI



What accessibility features are available at SAHMRI?

The SAHMRI ground floor (Level 3) is equipped with the following accessibility features:

- Automatic glass sliding doors at the main entrance.
- Right hand transfer unisex accessible toilets.
- Wheelchair-accessible baby change facilities.
- Hearing assist technology.
- Lifts to every floor.

Guide dogs and other registered assistance animals are welcome.

What are some other features of SAHMRI?

- Bike racks are located outside the SAHMRI building.
- A publicly accessible café is located on level 4 which has a range of healthy food options. It is open from 8:00am – 4:00pm, Monday to Friday.
- Baby change tables are available in the level 3 and level 4 disabled toilets.
- A wellbeing room is located on level 8 which contains a bed, fridge, chair and phone facilities. The room needs to be booked ahead of time and can be used for reasons such as expressing milk, breastfeeding, mediation or first aid.

Do I need to sign in when coming to SAHMRI?

The public can access level 4, however if you are meeting with someone, please sign in at reception. You will be provided with a visitor's sticker and must wear it at all times during your visit.

Do I need to sign out when leaving SAHMRI?

When you are ready to leave SAHMRI, please sign-out by scanning your visitors sticker at reception.

Tours



Joining a public tour of SAHMRI is a great way to familiarise yourself with the building, provide you with a deeper understanding about the vital role of health and medical research and give you an insight into why SAHMRI is such a unique organisation.

The tour costs \$10 per person.

To register for a tour of SAHMRI, please email **tours@sahmri.com** or click **[here](#)**

Training



Community members involved in the work of SAHMRI and Health Translation SA are encouraged to undertake training run by Health Consumers Alliance of South Australia (HCASA).

For a copy of the HTSA training calendar and to register your interest, please click **[here](#)**

If you have joined the Community Interest Register, SAHMRI and Health Translation SA will also inform you of any other training opportunities that become available via email.



About SAHMRI



SAHMRI is South Australia's first health and medical research institute. SAHMRI is home to more than 700 medical researchers, working together to tackle the biggest health challenges in our community today.

SAHMRI research focuses on four key themes including:

- SAHMRI Women and Kids
- Aboriginal Health Equity
- Precision Medicine
- Lifelong Health

SAHMRI's vision

Everything we do is geared towards one vision: conducting inspired research that will lead to better health outcomes.

SAHMRI values:

- Excellence
- Innovation
- Courage
- Integrity
- Teamwork

SAHMRI is:

- Bold, driven and dynamic
- Persistent and focused
- Collaborative and enabling
- Embrace diversity and demand equity
- Friendly, fast, flexible and fun

What does SAHMRI research aim to achieve?

Our research aims to:

- Deliver the right interventions, to the right people, at the right time in their lives to optimise health
- Be translational and deliver health outcomes with global impact to communities
- Provide a focus and leadership for health and medical research

For more information about SAHMRI, please visit the SAHMRI website [here](#)



About Health Translation SA



Health Translation SA brings together academic, research and health care agencies, and the community, to speed up research findings into clinical practice, policy and education.

Often there is significant time lag between new health and medical research findings leading to changes in clinical practice, policy and education.

Health research translation aims to use research findings in practical ways that will positively impact on the health of our community.

HTSA's vision

To continuously enhance the rate of translation of health and medical research into health care to create a self-improving, sustainable and high-quality health care system.

HTSA's mission

At a state level

HTSA brings together the expertise and strengths of our partner agencies, and the community, to speed up the translation of health and medical research findings into clinical practice, policy and education to improve health outcomes for South Australians.

At a national level

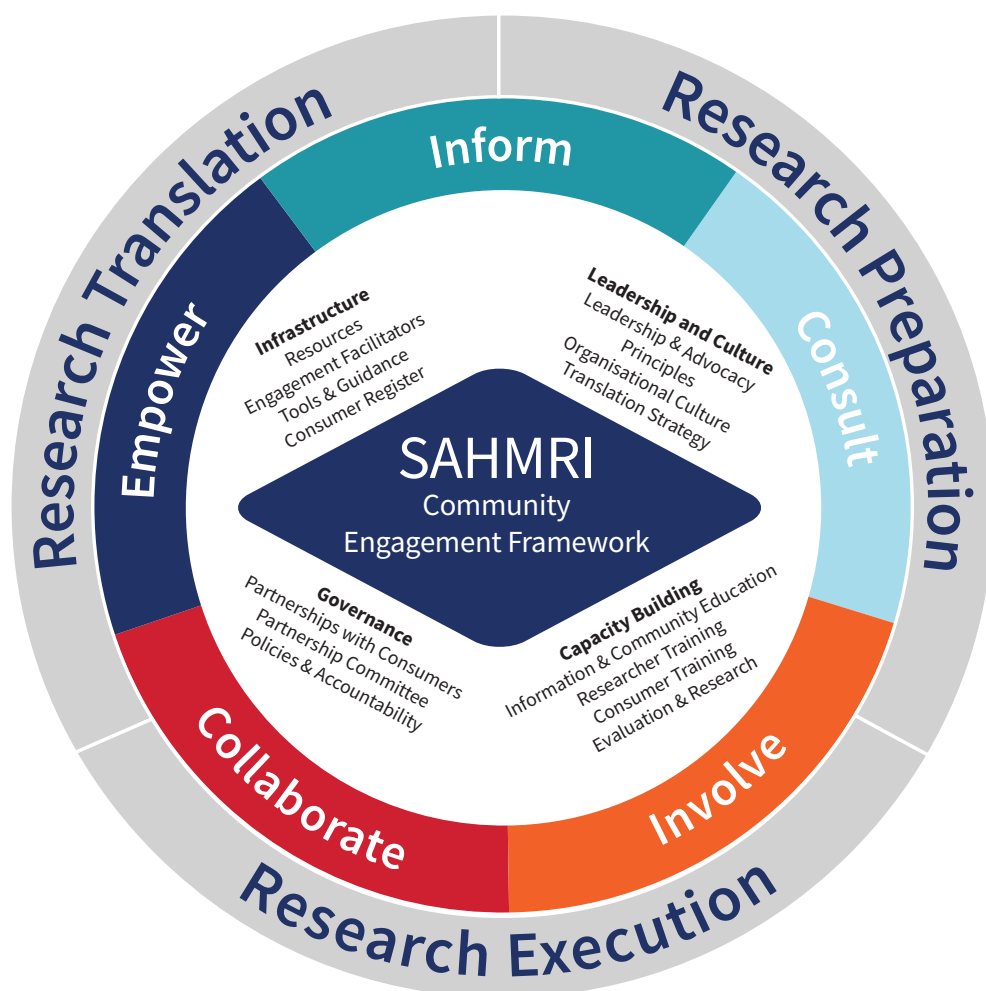
HTSA works collaboratively with other Advanced Health Research Translation Centre's to drive health research translation and research impact across Australia.

What are the goals of HTSA?

- To promote the importance of health research translation across academics, researchers, clinicians and policy makers;
- To foster engagement and connectivity between the partner agencies;
- To speed up the translation and scalability of health and medical research findings into clinical practice, policy and education;
- To develop ways to measure the impact of health and medical research on patient outcomes across our health system.

For more information about Health Translation SA, please visit our website [here](#)

Framework for Community Engagement



In 2014, SAHMRI partnered with Health Consumers Alliance of South Australia, researchers and community members to develop a Community Engagement Framework (The Framework).

The Framework was informed by a review of literature and current practice from across the world. The Framework has four areas: Leadership and Culture; Capacity Building; Governance; Infrastructure, and 17 operational elements.

SAHMRI is now actively implementing The Framework across the organisation.

Health Translation SA is working closely with SAHMRI on the implementation of the Framework and is promoting its adoption by their partner agencies.

How will the Framework help me?

The Framework will help to give you an understanding about the overall vision for community engagement within SAHMRI, and the broader South Australian research community.

Download The Framework [here](#)

Glossary of Terms



Community - the general public or a sub-group of people sharing a common interest (e.g. cultural, social, political, health, economic, or geographic interests). Different types of communities are likely to have different perspectives and approaches to their involvement in health and medical research.

Community Engagement - refers to arrangements for individuals to participate in the processes used to make good policy and to deliver programs and services. It can be a powerful vehicle for bringing about environmental and behavioural changes that may improve the health of the community through partnerships and coalitions that mobilise resources, influence systems and change relationships among partners.

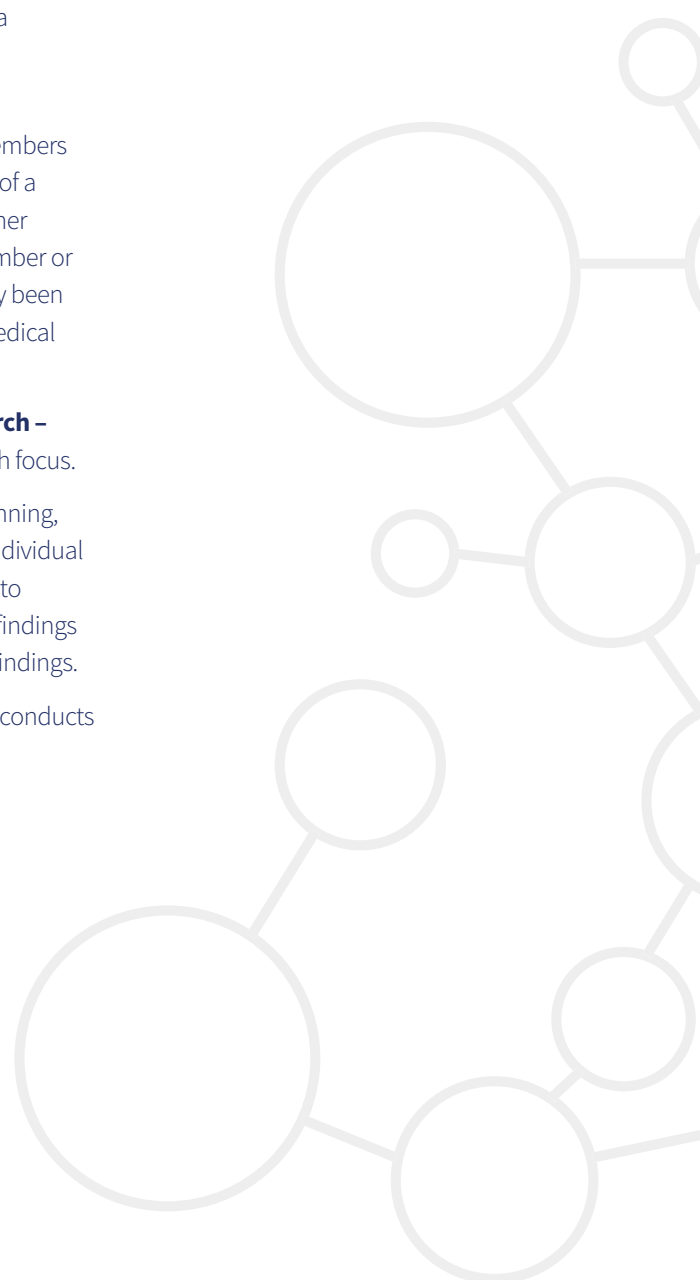
Community Member – a member of the general public and/or a subgroup(s) with a common interest(s).

Consumer – community members who have a lived experience of a specific health condition, either personally or as a family member or carer, and have consequently been a consumer of health and medical services.

Health and Medical Research – research with a human health focus.

Research Process – the planning, funding and conduct of an individual piece of research in addition to implementation of research findings and publication of research findings.

Researcher – a person who conducts research.



Useful Links



SAHMRI Community Engagement Framework

Framework Summary

https://www.sahmri.org/m/downloads/Framework_Summary.pdf

Framework Report

https://www.sahmri.org/m/downloads/Framework_Report.pdf

Framework Literature Review

https://www.sahmri.org/m/downloads/Literature_Review.pdf

Integrating consumer engagement in health and medical research - an Australian framework

https://www.sahmri.org/m/downloads/Integrating_consumer_engagement_in_health_and_medical_research.pdf

SAHMRI Reimbursement Policy

https://www.sahmriresearch.org/user_asset/2a75/2043

Community Engagement

Consumer and Community Health Research Network (WA)

<https://www.involvingpeopleinresearch.org.au/>

Involve (UK)

<https://www.involve.org.uk/>

Patient-Centered Outcomes Research Institute (USA)

<https://www.pcori.org/>

Canadian Institutes of Health Research – Strategy for Patient Oriented Research

<http://www.cihr-irsc.gc.ca/e/41592.html>

Statement on Consumer and Community Involvement in Health and Medical Research

https://www.sahmri.org/m/downloads/nhmrc_statement_on_consumer_and_community_involvement_in_health_and_medical_re_wbWlZeS.pdf

Health Consumer Alliance of South Australia

<https://www.hcasa.asn.au/>





SAHMRI North Terrace, Adelaide SA 5000

P +61 (0)8 8128 4031 **E** community@sahmri.com
PO Box 11060, Adelaide SA 5001

www.sahmri.org
www.healthtranslationsa.org.au

