

# Health Translation SA

## 2021-24 Strategy Highlights



## Contents

3	HTSA: Delivering research impact for SA
5	HTSA Strategy 2021- 2024
6	Bring the right people together
8	Get the right projects done
10	Build the right environment
14	Celebrate and showcase impact
16	Appendix 1
17	Appendix 2

Health Translation SA acknowledges the Kaurna people as the traditional custodians of the Adelaide region, we recognise the Kaurna peoples cultural, spiritual, physical and emotional connection with their land.

We honour and pay our respects to Kaurna elders, both past and present, and all generations of Kaurna people, now and into the future.

This review has been produced by Health Translation SA. You may download, display, print and reproduce the material in this publication in unaltered format for work, study and training purposes, subject to the inclusion of an acknowledgment of the source and reference to the title of the publication. Title: Health Translation SA 2021-24 Strategy Highlights. ISBN: 978-0-6452918-4-1

For more information go to the HTSA website [healthtranslationsa.org.au/](http://healthtranslationsa.org.au/)



# HTSA: Delivering research impact for SA

Our aim is to improve the health and wellbeing of South Australians by accelerating the translation of research evidence into healthcare practice and policy and increasing whole-of-state research translation capacity.

We do this by functioning as an independent catalyst and broker to:

- Mobilise **collaborations** that improve the translation of research into practice
- Facilitate and support research translation and health service improvement **projects** that address significant health and health system challenges
- Drive state-wide **system improvements** to enhance and enable research translation

HTSA is governed by the HTSA Board of Partners, which is independently chaired by Dr Leanna Read. The Board comprises representatives from each partner organisation and a consumer voice.

HTSA's Research Director is Professor Maria Makrides (Executive Director, SAHMRI) who took over this role from Professor Steve Wesselingh in September 2023.

HTSA's Executive Director, Wendy Keech, leads a small, focused, and agile team with broad experience across healthcare, research, and consumer engagement to deliver on the Board endorsed strategy.

HTSA has strong connections with the 13 other NHMRC accredited Research Translation Centres across Australia through the Australian Health Research Alliance (AHRA). Together these centres work to facilitate the integration of health care, health and medical research, and health professional education to deliver better health outcomes for all Australians.

Our work over the last 3 years has been guided by the HTSA Strategy July 2021 – June 2024 which focusses on four strategic priorities:

1. **Bring the right people together**
2. **Get the right projects done**
3. **Build the right environment**
4. **Celebrate and showcase impact**

This document highlights our ongoing commitment to advancing healthcare through improving the translation of research. The case studies presented are just a few examples of initiatives undertaken during the Strategy period to advance these priorities. For a comprehensive list of initiatives please see Appendix 2.

## A message from our Board of Partners Chair and Executive Director

We would like to express our thanks to our valued partners and the many stakeholder organisations, community members and individual clinicians, researchers, policy makers that make up the expansive HTSA community. These connections have been integral to our achievements thus far.

We are also very grateful for the administrative support we receive from the South Australian Health and Medical Research Institute (SAHMRI).

We look forward to many ongoing successful collaborations, transformative projects, and impactful moments in the coming years.



**Wendy Keech**  
Executive Director  
HTSA



**Dr Leanna Read**  
Independent  
Board Chair  
HTSA



## Did you know?

**\$ billions** are spent each year on health research, however, it takes an average of **17 years** for new scientific discoveries to enter day-to-day clinical practice.

At Health Translation SA we work with our partners, and other key stakeholders, to accelerate the translation of research evidence into health care practice and policy.

We do this by mobilising collaborations between the academic, health sectors and the community, supporting translation projects and driving statewide system improvements and capacity building initiatives.

Health Translation SA (HTSA) is South Australia's state-wide National Health and Medical Research Council (NHMRC) accredited Research Translation Centre.

We have 11 committed and active partners that represent a broad spectrum of healthcare and academic organisations. We also work closely with a range of other key stakeholders including consumers and the community, non-government organisations and foundations to achieve our aim (see Appendix 1).

### Our Partners



# HTSA Strategy 2021 - 2024

## Strategic priorities

### Bring the right people together

Mobilise leadership and collaboration to activate and improve the translation of research into practice

### Get the right projects done

Facilitate translation projects to address significant health and health system challenges

### Build the right environment

Drive state-wide system improvements to enhance and enable research translation

### Celebrate and showcase impact

Measure, demonstrate and communicate HTSA's role, successes and impact

## Key objectives

**Catalyse research translation** – Act as an independent broker that activates state-wide collaborative translation initiatives

**Facilitate collaboration** – Connect researchers, clinicians, policy makers, consumers, industry and other key stakeholders to address health system challenges through cooperative efforts

**Enable and drive impactful projects** – Identify areas of unmet need and enable impactful projects to be delivered across South Australia that address significant challenges

**Strengthen grant applications** – Support the development of strategic translational research grant applications

**Enable a state-wide 'Learning Health System'** – Advocate for and mobilise to improve data access and enhance analytic capacity across the health and research system

**Enhance clinical research** – Facilitate the improvement of clinical research processes, clinical research development and the clinical trials environment

**Build research translation capacity** – Develop research translation knowledge, skills, and expertise and establish collaborative networks across the research translation pathway

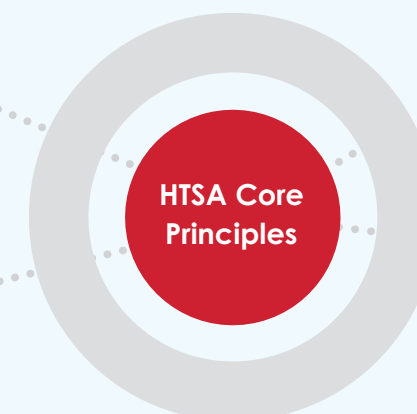
**Measure impact** – Use an impact framework and indicators of success to measure impact

**Create effective communications** – Deliver a targeted communication strategy that informs our audiences about our work, and the work of our partner organisations, and invite opportunities for collaboration and engagement

## The work of HTSA is guided by the requirements of the NHMRC's Translation Centre initiative and the following core principles:

Engagement with end users (specifically clinicians, community members and other stakeholders) underpins everything we do.

Evidence is the foundation for action and must be used to inform all projects and their development.



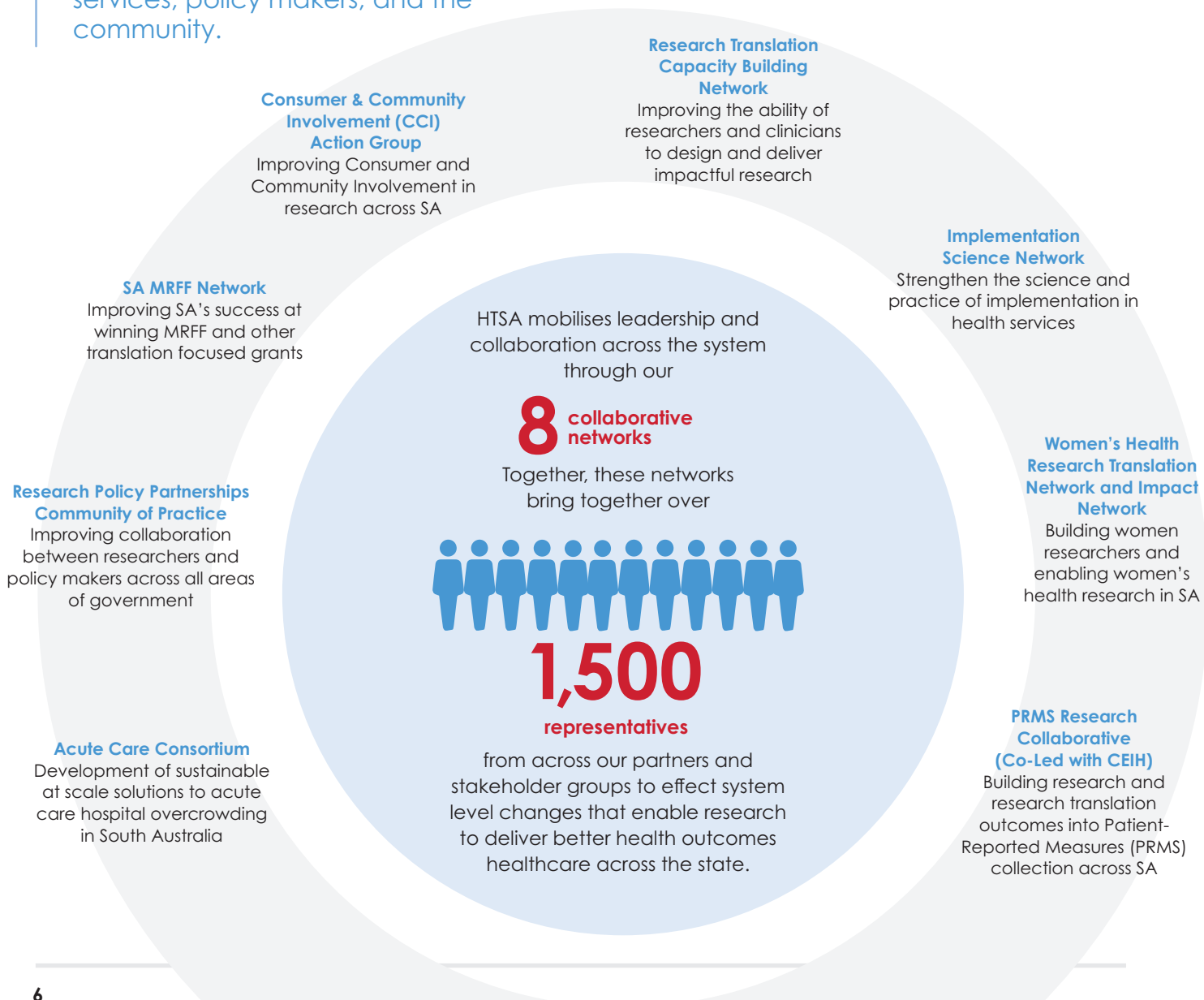
Collaboration is a normal way of doing our work, through bringing together the right team to develop projects.

Projects must be oriented around impact and address a well-defined problem that is of priority to the health system and the community.

# Bring the Right People Together

Despite research being critical to improving the healthcare system and people's health and wellbeing, only a small proportion of research is translated into clinical practice or policy and has real world impact. A key reason for this is the lack of strong connections across the health system between researchers, health services, policy makers, and the community.

**Health Translation SA** plays a pivotal role in acting as an independent catalyst to bridge the gap between academia, health services, policy makers and the community. It facilitates and enables the development of collaborations that effectively leverage the strengths of our partners to deliver statewide system improvements that enhance the translation of research.



CASE STUDY

## Implementation Science Network

There is a clear need to ensure that our health system is informed by and implements the best available evidence into clinical practice and policy to continue to deliver effective and efficient quality care to all South Australians.

To address this need, HTSA launched the Implementation Science Network (ISN) in 2022, chaired by Professor Gill Harvey (Flinders University) and Associate Professor Natasha Howard (SAHMRI).

The ISN aims to strengthen the science and practice of implementation in health and develop a shared vision for collaboration to scale and sustain the implementation sector in SA. It has over 130 members from across the health, and health and medical research sectors, and holds quarterly networking and training opportunities across metropolitan SA.



CASE STUDY

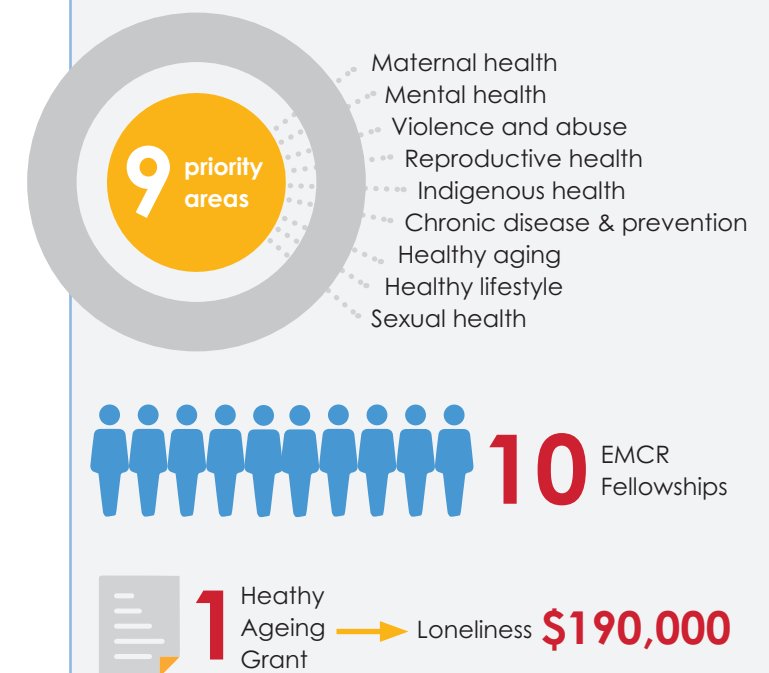
## AHRA Women's Network Research Translation and Impact Network (WHRTN) in South Australia

In Australia, women confront significant challenges that undermine equity, health outcomes, and overall well-being. These challenges include issues such as unequal healthcare access, gender based violence and socio-economic influences on health outcomes. A concerted effort to advance women's health research and ensure evidence-based policies and practices that address the unique health challenges faced by women is needed.

HTSA, in collaboration with partners across AHRA, established a national collaboration which spans community, health services and academic institutions to advance research translation across 9 priority women's health areas and support the leadership development of women researchers.

The South Australian node is led by HTSA and is co-chaired by Professor Deborah Turnbull (University of Adelaide) and Professor Marian Eckert (University of South Australia). It has over 450 network members, and since its inception in 2022, has convened 3 events that focussed on the capacity building of Early to Mid-Career Researchers (EMCRs).

### 2023 Highlights of the WHRTN





# Get the Right Projects Done

Health and medical research often lacks a clear focus on health system or community priorities and does not prioritise collaborations with clinicians, consumers, and health services.

**Health Translation SA** mobilises collaborations and facilitates and supports a range of impactful projects that address major health challenges in South Australia.

CASE STUDY


## HTSA Medical Research Future Fund (MRFF) Catalyst Grant Scheme


South Australia currently is not reaching its full potential in securing a significant share of the MRFF's \$20 billion fund that targets impactful health research and translation in areas of unmet need. This is a problem, as MRFF funding represents a major source of funding which can be used to improve our local health system and improve health outcomes.

Funding for the inaugural round of the Scheme was provided through generous support from The Hospital Research Foundation Group (\$240 000) and the Women's & Children's Hospital Foundation (\$120 000), with continued commitment for 2024.

### 2023 Highlights of the MRFF Catalyst Grant Scheme

 **43** Applicants

 **6** Projects **\$360k** Funding

 **Research areas:** ageing, rural mental health, Aboriginal and Torres Strait Islander mental health, caregiver wellbeing, eating disorders, health service delivery

In response, HTSA launched the HTSA MRFF Catalyst Grant Scheme (the Scheme) in collaboration with The Hospital Research Foundation Group and the Women's & Children's Hospital Foundation in 2023.

The Scheme aims to support research translation projects that address unmet health needs in South Australia and build a pipeline of projects ready for MRFF applications.

A key focus of the Scheme is to foster and support diverse collaborations between health service and research organisations. Projects must involve teams comprised of at least 2 health services, 2 academic/ research organisations and consumers.

CASE STUDY

## SA Acute Care Learning Health System Project

The issue of Hospital Emergency Department congestion and ambulance ramping in South Australia persists as a longstanding and significant problem. Despite its complexity, the responses thus far have been fragmented and siloed. There is a clear need for a coordinated and holistic approach to effectively tackle this seemingly intractable issue and bring about meaningful solutions.

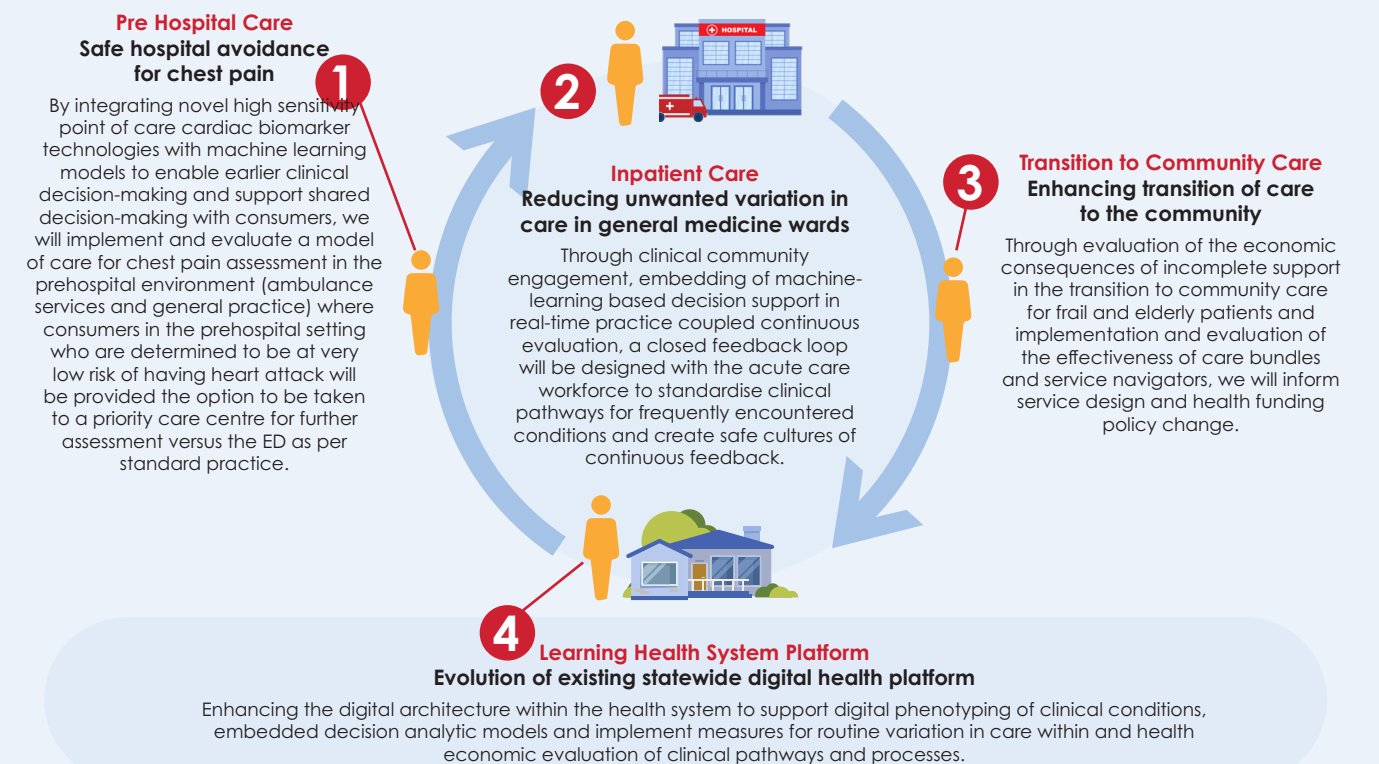
This comprehensive initiative, endorsed by the Commission on Innovation and Excellence in Health (CEIH), engages clinicians, researchers, consumers, and leadership from Local Health Networks and Priority Care Centres, SA Ambulance, the University of Adelaide, Flinders University, SAHMRI, Country SA PHN and Adelaide PHN.

The SA Acute Care Consortium, initiated by HTSA, facilitates cross-sector collaboration for the project's development and ongoing creation of sustainable, scalable solutions to address acute care hospital overcrowding in South Australia. HTSA also oversees the governance of this statewide system improvement project.

In 2021, HTSA played a pivotal role in co-developing a successful MRFF grant proposal, led by Professor Derek Chew (Flinders University) in collaboration with key health-system leaders in SA.

The project's goal is to establish a state-wide learning health system platform, facilitating the swift deployment, evaluation, and translation of innovative care models across South Australia, with a focus on alleviating pressure on Emergency Departments.

### Using a State-wide Learning Health System for the Rapid Deployment, Evaluation and Translation of New Models of Care in South Australia to Reduce Pressure on Emergency Departments and Acute Care



This project is funded by the Australian Government's Medical Research Future Fund (MRFF) as part of the MRFF – 2022 Models of Care to Improve the Efficiency and Effectiveness of Acute Care Grant Opportunity. (\$3.1 million)

# Build the Right Environment

**?** Research translation by necessity occurs within a complex and dynamic health and medical system. However, there are many system barriers to translating research at pace and scale, and seeing it embedded within the health system.

**Health Translation SA** employs a systemic approach to eliminating barriers and enabling research translation. Collaborating with its partners, HTSA identifies system impediments and mobilises key stakeholders to drive change across SA.

## Research translation capacity building

**?** Developing the research translation knowledge, skills and expertise among all health and medical researchers, clinicians, and health system project managers is critical for research translation success in SA.

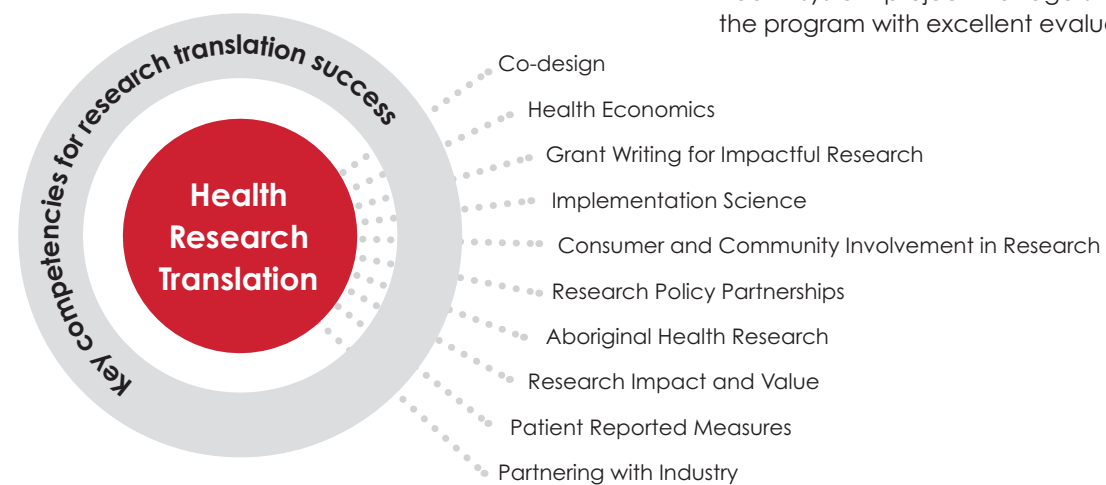
**CASE STUDY**  
**Research Translation Essentials Course**

**?** To effectively translate health research into clinical practice and policy requires a broad and complex range of knowledge, skills and expertise. Within SA, there was no course that brought all of these core competencies together.

Through initiatives like our Spotlight Series webinars, Research Translation Essentials Course, tailored consumer and community involvement training, and our collaborative networks, HTSA offer free or affordable training in essential research translation competencies to all our partners.

In 2023, HTSA formally launched our 2 day Research Translation Essentials Course which aims to empower participants to bridge the gap between their research and practical applications that improve healthcare and save lives.

Over 80 health and medical researchers, clinicians and health system project managers have since completed the program with excellent evaluation results.



**CASE STUDY**

## Consumer and Community Involvement

**?** While consumer and community involvement can play a significant role in enhancing the translation of health and medical research findings into clinical care, a lack of awareness and experience regarding how to engage with consumers in a meaningful way currently restricts the level of activity, funding success and the impact of the research.

Over the course of the 2021-2024 Strategy, the HTSA CCI Action Group has served to empower its members to advocate for CCI and build capacity within their respective organisations. It also provides an opportunity to share success and challenges.

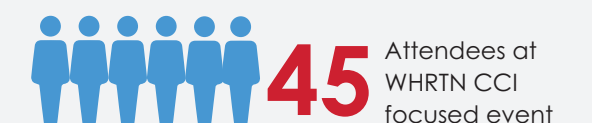
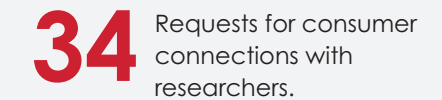
In addition to extensive capacity-building initiatives, HTSA also plays a pivotal role in facilitating connections between consumers and research projects through the CCI Registry, which currently comprises 154 registered individuals.

In response to these challenges, HTSA actively fosters collaborative approaches that bring together consumers, the community, researchers, and clinicians to ensure that health and medical research is priority driven and addresses the issues that matter to those most impacted by the research.



Recognising the need for a systematic approach to reduce variations in Consumer and Community Involvement (CCI), HTSA leads a CCI Action Group dedicated to activating effective CCI practices across the state. HTSA's CCI Action Group membership includes key CCI leaders within all HTSA partner organisations and several additional stakeholder organisations across SA.

### 2023 Highlights of CCI initiatives in SA





## Enhancing the clinical research ecosystem

Enhancing the clinical research ecosystem is vital for advancing medical knowledge, improving patient care through innovative treatments, stimulating economic growth and fostering global competitiveness. It plays a pivotal role in driving healthcare innovation, shaping evidence-based medicine, and positioning South Australia as a leader in medical research and patient-centered care.

HTSA has a longstanding history of advocating for and enhancing the clinical research ecosystem. Two examples include the establishment of a free clinical trials training platform in SA, and the development of infrastructure that enables data sharing and reuse between researchers.



### CASE STUDY

## Australian – Clinical Trials Education Centre (A-CTEC)

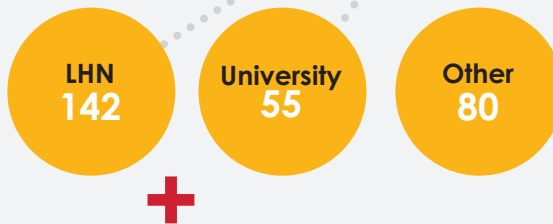
The clinical trials workforce in South Australia, had limited access to affordable, world-class clinical trials training. This limitation not only impeded the advancement of high-quality clinical trials across diverse healthcare settings but also hampered the economic potential of the region.

HTSA played a crucial role in facilitating easily accessible, world-class education and training at no cost to the end user in South Australia. Through collaboration with SA Health and the Australian Tele-trials Program, we successfully introduced A-CTEC, developed by the Melbourne Academic Centre for Health (MACH) in 2023.

A-CTEC offers education and training tailored to the varied experience and competency levels of the clinical trials workforce, addressing the needs of different settings undertaking clinical trials across metropolitan, regional, and rural Australia.

### 2023 Highlights of A-CTEC in SA

Currently, there are **277** registered users in SA



staff from the Australian Tele-trials Program-SA and SAHMRI Clinical Trials Platform continue to be actively involved with the A-CTEC leadership team, working to enhance A-CTEC's content and utilisation across Australia, ensuring its effectiveness in elevating clinical trials education and training nationwide.

### CASE STUDY

## Health Studies National Data Asset program (HeSANDA)

Data collected across research studies should be valuable for more than just the original piece of research. It should be reused to inform the design of new studies and new analyses to generate new research findings.

However, issues of privacy and consent, the naturally siloed approaches of research groups and limitations of government jurisdictions means that sharing data for these valuable purposes is complex and sometimes impossible.

The Australian Research Data Commons (ARDC) is building HeSANDA — a crucial national infrastructure enabling researchers to access and share data from clinical trials and cohort studies. This initiative involves 9 HeSANDA nodes nationally, representing over 70 health research organisations.

HTSA has played a pivotal role in ensuring the inclusion of South Australia from the inception of HeSANDA, actively collaborating with partners to pilot and shape this groundbreaking national data asset.

As the leader of the South Australian Node, HTSA championed the development and launch of Health Data Australia (HDA) in 2023. HDA serves as a comprehensive catalogue, empowering health and medical researchers to register metadata about their clinical trials.

HTSA's proactive involvement ensures South Australia is positioned to be a key contributor to the advancement of medical research in Australia through the enhancing data accessibility and fostering collaboration.





# Celebrate and Showcase Impact

**?** Demonstrating and communicating the impact of research translation and Research Translation Centres, such as HTSA, is difficult - yet necessary to securing the ongoing stakeholder engagement and investment required to see research effectively embedded in the health system and improving health outcomes.

Impact measurement is made more complex by the lack of standardised metrics, time-lags to realising impact, the breadth of stakeholders needed to contribute to the metric collection and the limited resources available (in terms of both funding and dedicated personnel).

**Health Translation SA** is creating a bespoke model for capturing research translation impact, as well as the impact our system has on building the capability of people and the capacity of the system to translate research into practice at pace and scale.

HTSA has also developed a targeted communication strategy that informs our audiences about our work, the work of our partner organisations and invites opportunities for collaboration and engagement.

> Celebrating 2023 Catalyst Scheme grant recipients



## Measuring impact

HTSA has developed an impact framework and formally commenced the collection of impact metrics via our own digital impact capturing tool during 2023. We are currently refining the tool and will pilot with our Flagship Programs in 2024 to see if it is useful for researchers to use to track and report their own impacts over time.

HTSA also initiated and is co-leading a national AHRA Research Translation Centre impact measurement project with the Hunter Medical Research Institute.

## NHMRC reaccreditation

HTSA's proven ability to mobilise collaborations, drive statewide system improvements and capacity building initiatives and support research translation projects was recognised in official reaccreditation (2022-2027) by the NHMRC - formally announced in 2023.

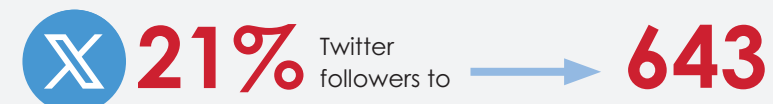
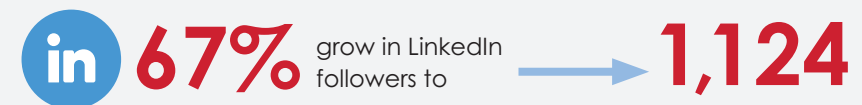
## Create effective communications

Over the course of the strategy, there has been a notable evolution in the sophistication of HTSA's branding and communications, and of HTSA as an organisation.

The focus has been on ensuring our partners and other stakeholders have a clear understanding of what we do and what we offer.

Creating regular social media and newsletter content, publishing collateral material needed to promote our events and services, developing a sub-brand logo to improve connection to our products, networks and services have all been significant outcomes.

### 2023 Highlights of HTSA communication activities





# APPENDIX 1:

A snapshot of organisations HTSA has worked collaboratively with during 2021-2024

## SA Health Services

Department of Health and Wellbeing  
Northern Adelaide Local Health Network  
Southern Adelaide Local Health Network  
Central Adelaide Local Health Network  
SA Pathology  
SA Dental  
SA Pharmacy

## Women's and Children's Health Network

### Local Health Networks in regional South Australia

Barossa Hills Fleurieu  
Eyre and Far North  
Flinders and Upper North  
Limestone Coast  
Riverland Mallee Coorong  
Yorke and Northern

## LHN Research Directors Alliance

### Office of Rural Support Services

### SA Virtual Care Service

### Commission on Excellence and Innovation in Health

### Digital Health SA

### Riverland Murray Coorong Local Health Network Rural

### Academic Centre of Excellence

### Child Protection and Policy Unit

## Organisations with a Primary Care focus

Adelaide PHN  
Country SA PHN  
Sonder  
Aboriginal Health Council of SA  
Aboriginal Community Controlled Services in SA  
GPEx  
The Royal Australian College of General Practitioners (SA)

## Organisation with an intermediary role in SA

MTP Connect Adelaide Intermediary Program  
Adelaide Health Innovation Partnership  
Adelaide BioMed City  
Office of the Chief Scientist  
Office of the Chief Entrepreneur  
Department of Trade and Investment  
Department of Innovation and Skills  
Aged Care Research and Industry Innovation Australia  
Medical Devices Partnering Program

## Foundations and other key stakeholders

The Hospital Research Foundation Group  
Women's and Children's Foundation  
Cancer Council SA  
The Heart Foundation (SA)



# APPENDIX 2:

## Health Translation SA 2021-24 Summary

The list below provides a summary of the full breadth of connections, initiatives, and projects HTSA has been involved with during the period 2021-2024.

## Strategic Priority Bring the Right People Together

**HTSA Board and Board Working Groups**  
Guide strategic and operational activities.

**HTSA Stakeholder Forum**  
Mobilising HTSA key leaders, non-government organisations, funders, and the community to contribute to HTSAs work agenda.

**Australian Health Research Alliance**  
Advocating for and delivering national research translation initiatives with the other 13 NHMRC accredited Research Translation Centres across Australia.

**Health and Medical Research Advocacy**  
Leading statewide advocacy activities to promote, grow and translate health and medical research across SA.

**Consumer and Community Involvement**  
Facilitating widespread and effective involvement of consumers and community members in research projects.

**Collaborative Networks**  
Mobilising leadership and collaboration across the system from across our Partners to effect system level changes that enable research to deliver better health outcomes for society healthcare across the state.

- Women's Health Research Translation Network
- Implementation Science Network
- Patient Reported Measures Research Collaborative with CEIH
- Consumer and Community Involvement Action Group & Community of Practice
- SA MRFF Network
- Research Translation Capacity Building Network
- Research Policy Partnerships Community of Practice
- SA Acute Care Consortium

## Strategic Priority Get the Right Projects Done

### ENABLING & DRIVING IMPACT PROJECTS

**HTSA Connected Care Project**  
Working towards linking real-time data sharing between hospitals and the primary care sector in SA to improve continuity of care. (Lead: Dr Ecushla Linedale, HTSA)

**MRFF SA Acute Care Learning Health System Project**  
Developing a state-wide learning health system for the rapid deployment, evaluation, and translation of new models of care in SA to reduce pressure on acute care services. (Lead: Prof Derek Chew, Flinders University)

**CALHN My PreHab Project**  
Developing a digitally enabled model of prehabilitation to enable people to get healthier before surgery thereby improving health outcomes and reducing post-operative complication rates. (Lead: Prof Jane Andrews, CALHN)

**Aboriginal Child and Maternal Health Project**  
Providing strategic advice and linkages with researchers and HTSA partners to support the Department of Health and Wellbeing Continuity of Care Protocols (CCP) - Pre-Testing and Testing Phase.

**Flagship Programs**  
HTSA supports and enables six state-wide, collaborative programs (Flagship Programs) that bring together teams of researchers, clinicians, policy makers and consumers to address significant areas of need.

**> Omega 3 Test and Treat**  
Aims to provide a free test that identifies women who are low in Omega-3 and may benefit from omega-3 supplementation to reduce their risk of preterm birth. (Lead: Prof Maria Makrides, SAHMRI).

**> The Registry of Senior Australians (ROSA)**  
Aims to monitor the health, service utilisation, medication use, social welfare, mortality, and other outcomes of people receiving aged care services in Australia. (Lead: Prof Maria Inacio, SAHMRI)

**> SA Aboriginal Chronic Disease Consortium**  
Aims to use research findings to improve services and care for chronic diseases among Aboriginal and Torres Strait Islander people in South Australia for three chronic disease areas: Heart and Stroke, Diabetes, and Cancer. (Lead: Kim Morey, SAHMRI)

### > Health in All Policies

Aims to strengthen the capacity for a better approach to policy making by addressing the barriers associated with research-to-policy translation. (Lead: A/Prof Carmel Williams, University of Adelaide)

### > AI2 Project (CareMappr)

Aims to offer a solution to the challenge of hospital overcrowding and mental health relapses by leveraging artificial intelligence technology through the development of a digital clinical decision support system. (Lead: Prof Niranjana Bidargaddi, Flinders University)

### > Country Heart Attack Prevention Project (CHAP)

Aims to provide evidence-based cardiac rehabilitation services to all eligible patients in South Australia through boosting completion rates in rural and remote areas; engage clinicians to recommend cardiac rehabilitation; developing an auto-referral system; provide a range of delivery methods including face-to-face, telephone support, apps, websites, and general practice models. (Lead: Prof Robyn Clark, Flinders University/SALHN).

### MRFF Rapid Applied Research Translation Project (Round 3)

HTSA co-ordinated and continues to support the following MRFF Round 3 state-wide collaboration projects:

- Frail Ageing Collaborative project (STARR)
- Mental Health Project (AI2)
- Aboriginal Capacity Building project (StACTD)
- Health Analytic Research Collaborative (HARC) – Data Fellows
- Acute Primary Care Interface Data Project
- Wound Care Project
- Embedded Economist
- AKCTION Aboriginal Kidney Care

### WHRTN Loneliness Grant

Facilitating the development of a South Australian led Co-Design project on Loneliness in mid-age women.

### RAPIDx-AI

Facilitating engagement with LHN Executives (Lead: Kristina Lambrakis, Flinders University)

### Department of Trade and Investment

Providing strategic advice and conducting consumer and community consultation on the Healthcare Consortium's data project proposal development.

### STRENGTHENING GRANT APPLICATIONS

#### HTSA MRFF Catalyst Grant Scheme

Developing a pipeline of collaborative research projects to increase SA's success at winning MRFF funding.

#### Grant development Advisory Service

Providing advice on research team development, research impact, consumer and community involvement in research and implementation science (in addition to letters of support).

#### AHRA Regional, Rural and Remote (R3) Network

Advocating for funding and support to grow R3 place based funding for impactful health and medical research projects across Australia.

### HTSA SA MRFF Network

Improving SA success in MRFF applications through knowledge sharing among HTSA partners and the development of collaborations with health services and industry.

## Strategic Theme Build the Right Environment

### ENABLING A LEARNING HEALTH SYSTEM

#### Indigenous Data Sovereignty Project

Improving our understanding of how to apply the principles of Indigenous Data Sovereignty and Governance to health system projects and data management to improve health and wellbeing outcomes within these communities. (Lead: Prof Odette Pearson, SAHMRI)

#### Enabling a Digital Workforce

Working with Digital Health SA and the CEIH to develop a strategy to build digital capacity and capability across the SA health workforce.

#### Community Data Insight Project

Understanding how Australians feel about the use of their health data for research purposes via a systematic review. (Lead: Dr Mehra Zakercharak, HTSA)

#### Data Access and Analytics

Working to improve data access for health and health and medical research in SA, with a focus on non-SA Health researchers.

- Serving on SA's Data and Analytics Project Board and Data Governance group
- Assessing the legislation for data access for health and medical research in partnership with the CEIH, Digital Health SA, Flinders University, and the University of Adelaide.
- Evaluating the pilot of a new Local Health Network (LHN) Data Access process for non-SA Health researchers to health service and clinical research data.
- Advancing the provision of synthetic SA Health Data for research and health service modelling with Digital Health SA, specifically the OCMIO, and researchers.

#### Consent Project

Advancing the policy agenda for different forms of consent across SA.

#### Cogstack Project

Conducting a feasibility assessment of the potential use of the Natural Language Processing tool 'Cogstack' to support health and medical research in SA (in partnership with Digital Health SA).

### ENHANCING THE CLINICAL RESEARCH ECOSYSTEM

#### Clinical Research Governance

Implementation the Jim Birch Review recommendations to improve governance arrangements (ethics and SSA's) across the state.

#### Health Studies National Data Asset program (HeSANDA)

Supporting the secondary use of clinical trial research data in SA.

#### Australian Clinical Trials Education Centre (ACTEC)

Bringing free clinical trial training to South Australia in partnership with the Melbourne Academic Centre for Health and SA Health.

#### Asset Mapping

Increasing the transparency and visibility of research and research assets in South Australia.

- COVID Mapping – All SA COVID research during the pandemic to inform local and federal responses
- Cancer Research Mapping - identified projects and resources across SA, particularly in local Health Networks
- Northern Adelaide Health Research Mapping project for the Northern Adelaide Health and Wellbeing Partnership.

#### Regional Tele-Trials

Providing advice to support the development and delivery of the Australian Tele-trials program in SA.

### BUILDING RESEARCH TRANSLATION CAPACITY

#### Research Translation Capacity Building Network

Developing a strategy for building the capability of researchers, clinicians, and health services to effectively move evidence into practice.

#### Research Translation Essentials Course

Delivering affordable training in key research translation competencies to all partners, via 2-day in-person courses.

#### Spotlights Series

Providing free learning in key research and research translation competencies via quarterly webinars.

#### Women's Health Research Translation Network

Building the leadership skills of women researchers through quarterly network meetings.

#### Implementation Science Network

Building the knowledge, understanding and skills of clinicians and researchers to use implementation frameworks and tools to move evidence into practice effectively.

#### Research Policy Partnerships Community of Practice

Improving collaborations between researchers and policymakers across all government sectors. (Lead: Prof Carmel Williams, University of Adelaide).

#### Consumer and Community Involvement (CCI)

Providing free bespoke training and advice for researchers/groups in how to involve consumers and community in research.

### CCI Registry

Connecting researchers with consumers and community members.

### CCI Community of Practice

Increasing the quality and quantity of (and showcasing) consumer and community engagement in research projects across SA through quarterly meetings and an annual showcase event.

### iRNet

Building the capability and capacity of Indigenous Researchers. (Lead: Professor Alex Brown)

### Fellowships/Interns

Building the capability and capacity of individual researchers through placement with HTSA as Research Translation Fellows, PhD Industry Internships, and Undergraduate Summer Scholarships and WHRTN E/MCR Awardees.

## Strategic Theme Celebrate and Showcase Impact

### MEASURING IMPACT

#### Impact Framework

HTSA has developed an impact framework and formally commenced the collection of impact metrics via our own digital impact capturing tool during 2023.

#### AHRA Impact Measure Project

HTSA initiated and is co-leading a national AHRA Research Translation Centre impact measurement project with the Hunter Medical Research Institute.

#### NHMRC Reaccreditation

In 2023, it was announced that HTSA received official reaccreditation (2022-2027) by the NHMRC (via internationally recognised expert panel).

### CREATE EFFECTIVE COMMUNICATIONS

#### Communication Strategy

In 2023, HTSA Communication Strategy was refreshed with a renewed focus on ensuring our partners and other stakeholders have a clear understanding of what we do and what we offer.





## Contact Us

**P** +61 8 8128 4380

**E** [enquiries@healthtranslationsa.org.au](mailto:enquiries@healthtranslationsa.org.au)

**Postal address** PO Box 11060, Adelaide SA 5001

**Address** SAHMRI, North Terrace, Adelaide SA 5000